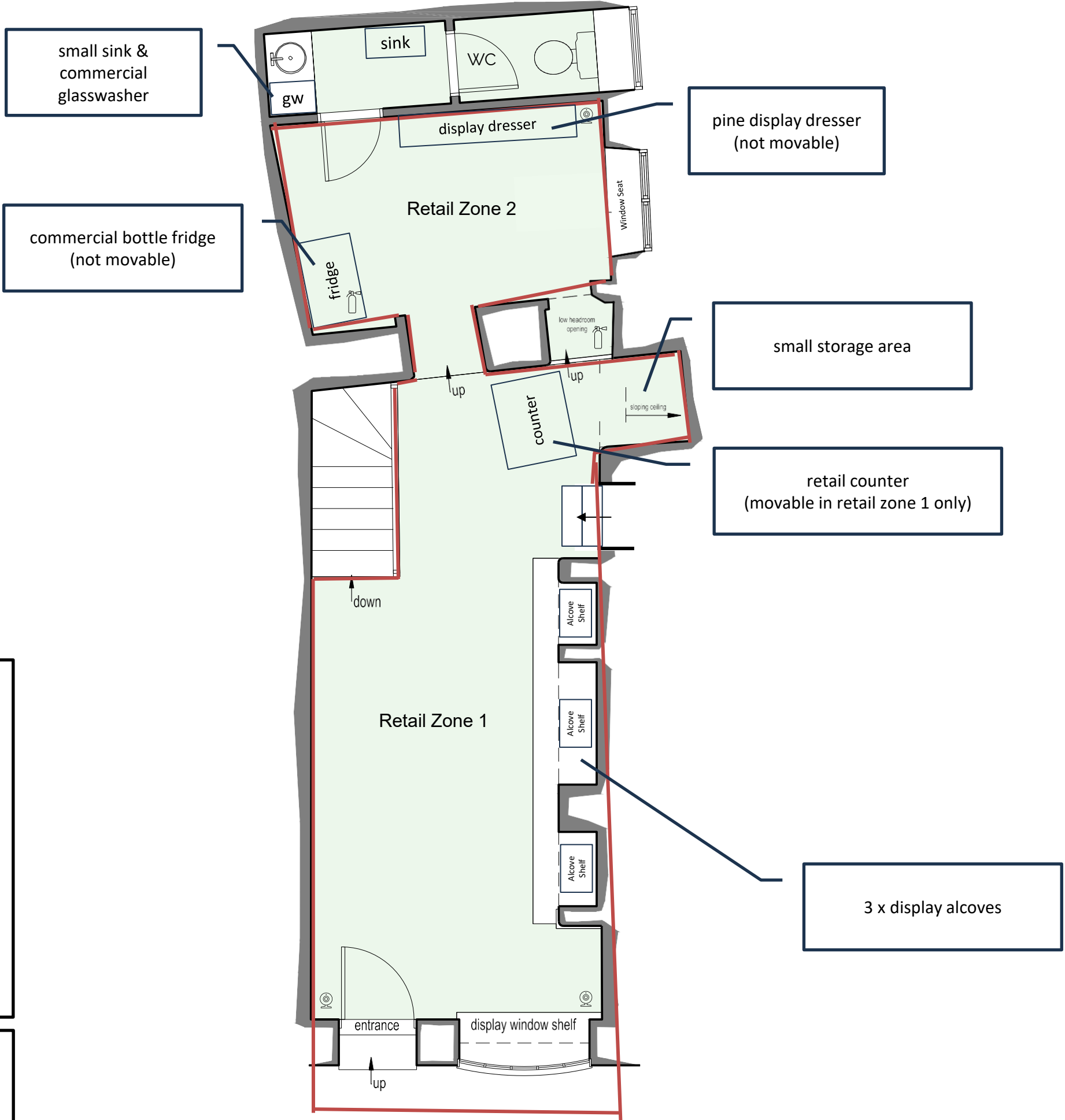


**Number 1
Woodstock Popup**

**Ground Floor
(~30 sq.mtr)**



small sink & commercial glasswasher


pine display dresser (not movable)

commercial bottle fridge (not movable)

small storage area

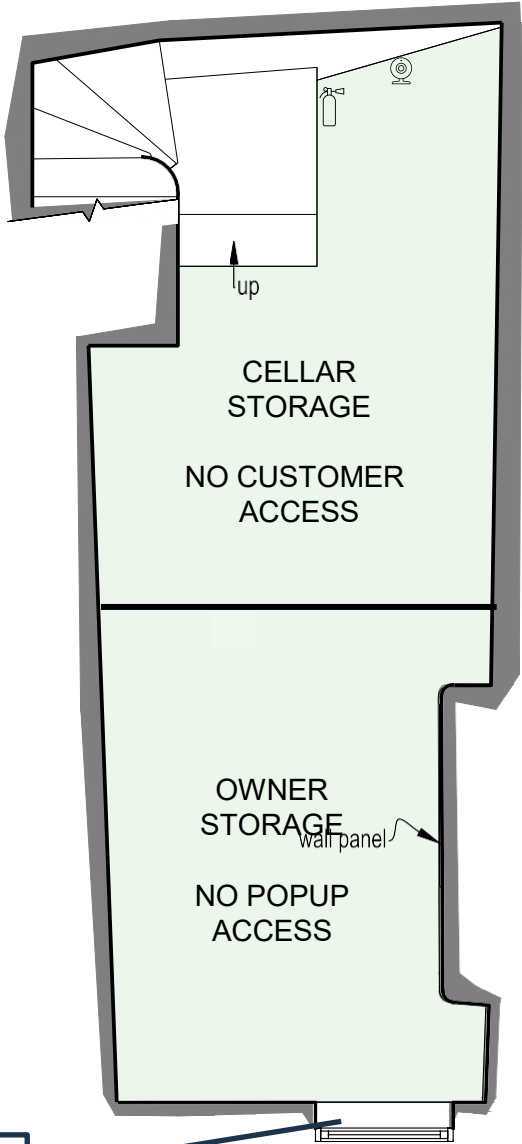
retail counter (movable in retail zone 1 only)

3 x display alcoves


 CCTV
 Licenced Area For Alcohol Sales
 Fire Extinguisher

Retail Zone 1 - W3.0m x L7.3m
 Retail Zone 2: W3.5m x L2.2m
 *all dimensions are approximate & max

Number 1
Woodstock Popup
Lower Ground Floor
(~10 sq.mtr)



cellar ventilation

 CCTV

 Licence Area For Alcohol Sales

 Fire Extinguisher

Cellar: W2.7m x L3.5m

*all dimensions are approximate & max